

COSMIC QUAD LED / COSMIC LED SURFACE MOUNTED LIGHTING FITTING

OPERATING INSTRUCTIONS

Dear Customer,

Thank you for the confidence you have bestowed on our company by choosing to purchase one of our devices. Prior to its use, for the sake of your own safety, please review carefully information about the product provided below.

INSTALLATION INSTRUCTIONS

The lighting fitting is made of plastic (ABS) with a polycarbonate shade and is intended for surface mounting. The light source is 10W LED supplied with mains voltage via a ballast and ignition module, integrated with the lighting fitting. The design of the lighting fitting and the materials used ensure high mechanical strength as well as resistance to water and dust penetration.

USE

For illumination of plates with numbers on buildings, lighting of staircases, garages, corridors and halls as well as various types of entrances and driveways.

POWER SUPPLY VOLTAGE

230V/50Hz.

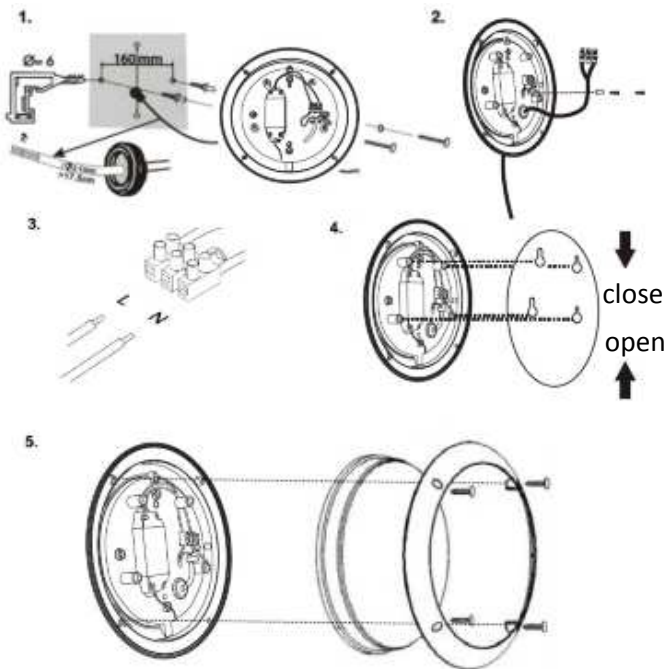
INSTALLATION

Before connecting, make sure that the power is turned off.

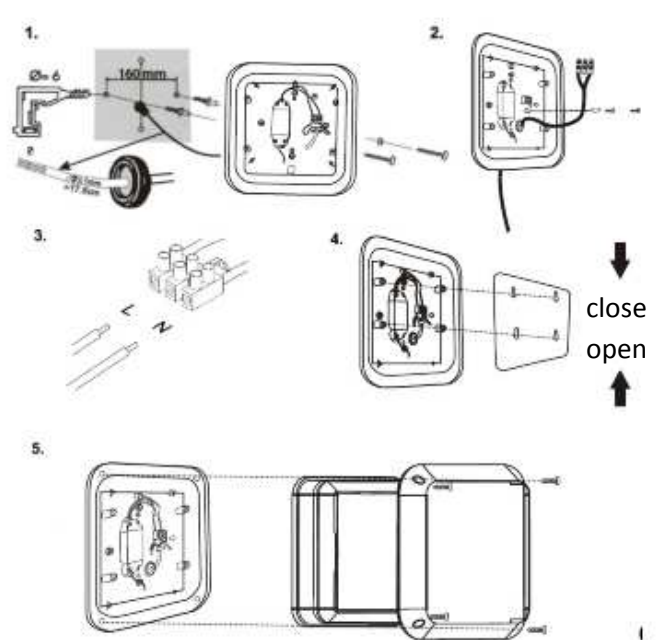
Electrical wiring must be connected in accordance with the instructions and applicable regulations.

1. Drill two holes properly spaced properly in the surface on which the lighting fitting is to be mounted.
2. Insert rawlplugs into the holes (in scope).
3. Remove the lamp shade by loosening the mounting screws.
4. Remove the screws that secure the diode plate.
5. Run the power cord through the hole in the bottom of the lighting fitting.
6. Secure the lighting fitting with two screws in the two rawlplugs.
7. Insert and secure the diode plate.
8. Remove part of the insulation from the power cord (app. 1 cm) and connect it to the connector terminal as follows: the phase wire (brown or black) in the hole marked "L", the neutral wire (blue) in the hole marked "N" and the protective (yellow- green) in .
9. Put the shade on and snap it in place.

COSMIC LED



COSMIC QUAD LED



This symbol indicates selective collection of electrical and electronic equipment. Obsolete equipment must be returned to appropriate WEEE collection point.

REMARKS

- any settings, installation, replacement of light sources can only be carried out when the supply voltage turned off;
- carrying out any work when the power is on may cause electric shock. If in doubt, please contact a qualified electrician.

DECLARATION OF CONFORMITY

The products described herewith meet the requirements of the following EU Directives:

- Low Voltage Directive (LVD 73/23/EEC);
- Electromagnetic Compatibility Directive (EMC Directive 89/336/EEC).

GUARANTEE

Intelight Sp. z o.o. provides free removal of faults resulting from defects in material and workmanship by repairing or replacement of the device, for a period of two years from the date of purchase. In case of malfunction, please deliver the product to the place of purchase along with a warranty tag. The guarantee shall not cover wearing parts as well as defects resulting from improper operation of the device, in particular mechanical damage or malfunction caused by temperature or chemical agents. Please also note that the costs of unjustified complaint shall be charged to the customer. For complete guarantee details please visit our website at: www.intelight.eu

Intelight Sp. z o.o. shall not liable for damages resulting from improper installation or use of improper light source.

Intelight Sp. z o.o. reserves the right to change the design of the product.